

14 500 €

Buying terrain

Surface : 2761 m²

Field appearance : Arboré

Exposition : Sud

Features :

calm

Energy class (dpe) : Unavailable

Emission of greenhouse gases (ges) :

Unavailable



Terrain 1455 Mandelieu-la-Napoule

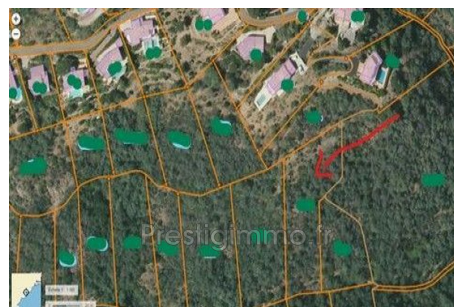
Mandelieu Land on the hill of Mandelieu on the heights of Capitoux. Inconstructible Natural Npr zone, at the limit of construction. Land of 2,761m² wooded. Your contact Fabrice DI PONIO 06.20.96.65.51 manager.

Fees and charges :

14 500 € fees included

Document non contractuel

27/03/2023 - Prix T.T.C



Prestigimmo.fr - 2791, Ch. de St Bernard, Sophia Antipolis accès N°1, Porte 19, Bât. B - 06220 Vallauris Cedex
Tél. +33 (0)4 92 96 99 69 - contact@prestigimmo.fr